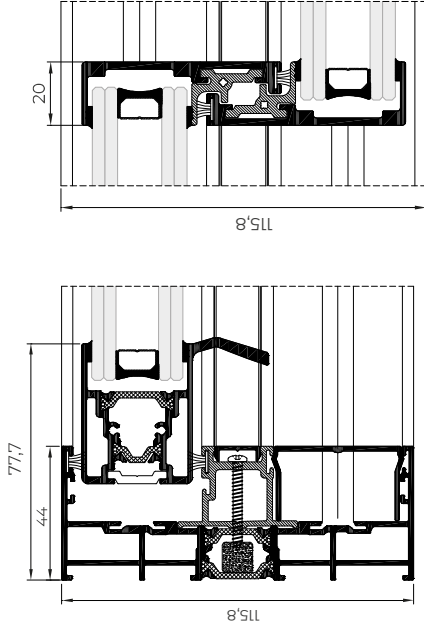


COR VISION

Thermally broken minimalist sliding system that provides maximum luminosity with a minimal aluminium interlock profile. It has an elegant design only 20 mm sightline and offers the possibility of an inlaid closing system and of hiding the frame along the perimeter.

Possibility of locking system in the interlock, thus allowing the concealment of the sashes in the frame from a frontal view.



FEATURES

Transmittance  $U_w \geq 1,3 (W/m^2K)$

Acoustic insulation  R_w up to 41 dB

Air permeability  Class 4

Water tightness  Class 7A

Wind resistance  Class C5

Reference test 1,23 x 1,55 m / 1 sash + 1 fixed light

Sliding
Thermally broken

Sightlines

Frame 116 mm / 182 mm 3 rails

Sash 37 mm

Polyamide Strip Length

16 / 24 mm

Profile Thickness

Door 1,7 mm

Glazing

Máx. 30 mm, Mín. 26 mm

Maximum Sash Dimensions

Width (L) 2500 mm, Height (H) 3000 mm

Maximum Sash Weight

320 kg

Consult maximum weight and dimensions according to typologies

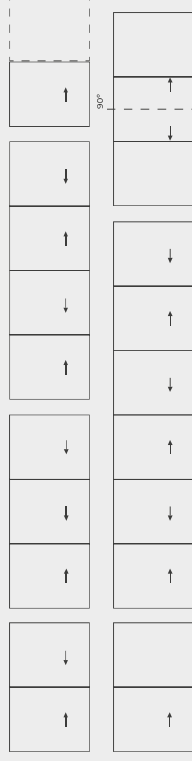


POSSIBILITIES



ACCESSIBILITY

OPENING POSSIBILITIES



Sliding

Possibility of 1, 2 or 3 rails

Possibility of interior and exterior

corner at 90° without mullion

Pocket possibility

COR VISION

