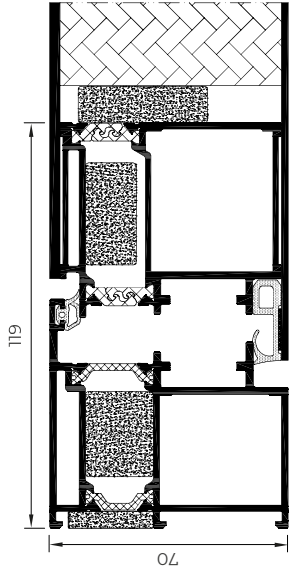


Panelled DOOR

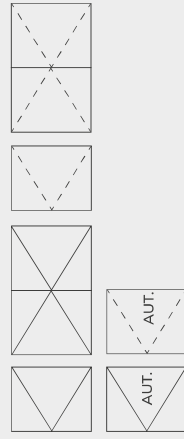


Doors

Compatible with the Millennium Plus 80 and Millennium Plus 70 series, it incorporates a panel integrated into the sash, which allows a wide range of aesthetic possibilities. In addition, it allows for the installation of an embedded handle with led illumination and a scanner.



OPENING POSSIBILITIES

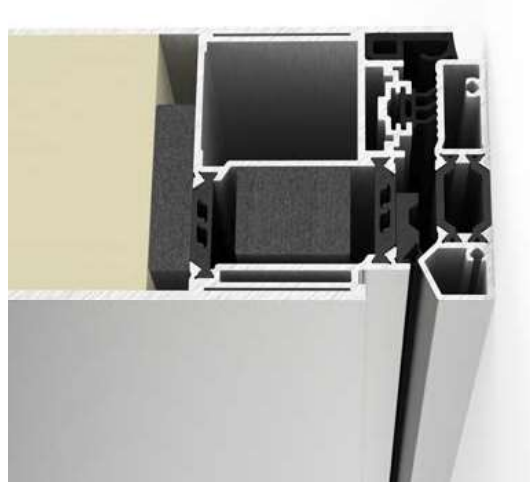


Inward Opening
Side hung
Automatic side hung

Outward Opening
Side hung
Automatic side hung

Wind resistance: Reference test 1,20 x 2,30 m / 1 sash
Resistance to mild impact: Test carried out according to standard UNE-EN 13049
Test on door reference 1,80 x 2,20 m / 2 sashes. Laminated glass 3+3
Resistance to repeated openings and closing: Test carried out according to standard UNE-EN 1191
Test on door reference 0,935 x 2,10 m / 1 sash

*Compatible with Millennium Plus 70 and 80 doors



Sightlines

Frame 80 / 70 mm, Sash 80 / 70 mm

Polyamide Strip Length

30 / 34 mm (80)

20 / 24 mm (70)

Profile Thickness

Door 2,0 mm

Panel

Max. 80 mm, Min. 33 mm (80)

Max. 70 mm, Min. 23 mm (70)

Maximum Sash Dimensions

Door:

Width (L) 1800 mm, Height (H) 3000 mm

Concealed door hinges:

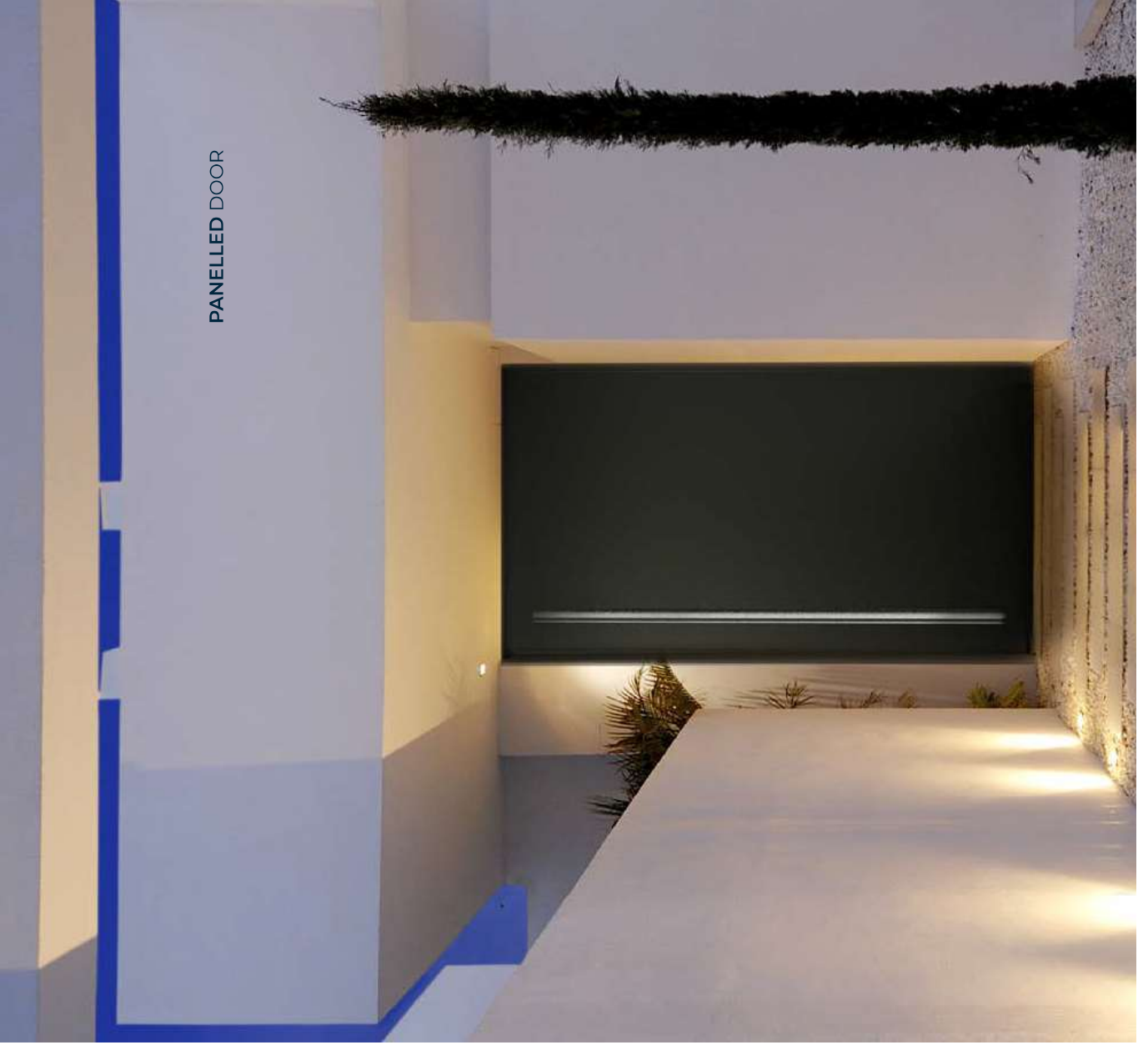
Width (L) 1500 mm, Height (H) 2700 mm

Maximum Sash Weight

220 kg

120 Kg (concealed hinges)

Consult maximum weight and dimensions according to typologies



PANELLED DOOR